

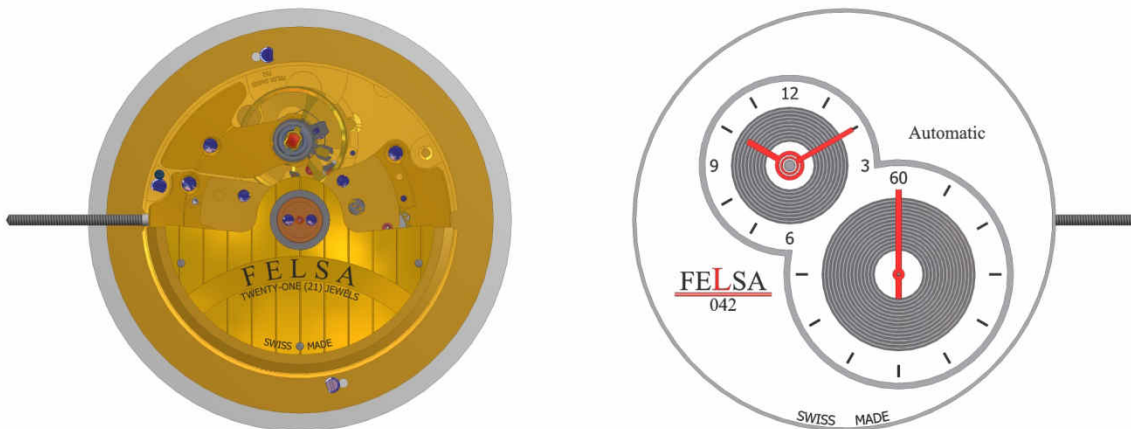
FELSA

SWISS S.A.

Fabrique d'Ebauches Leschot S.A.

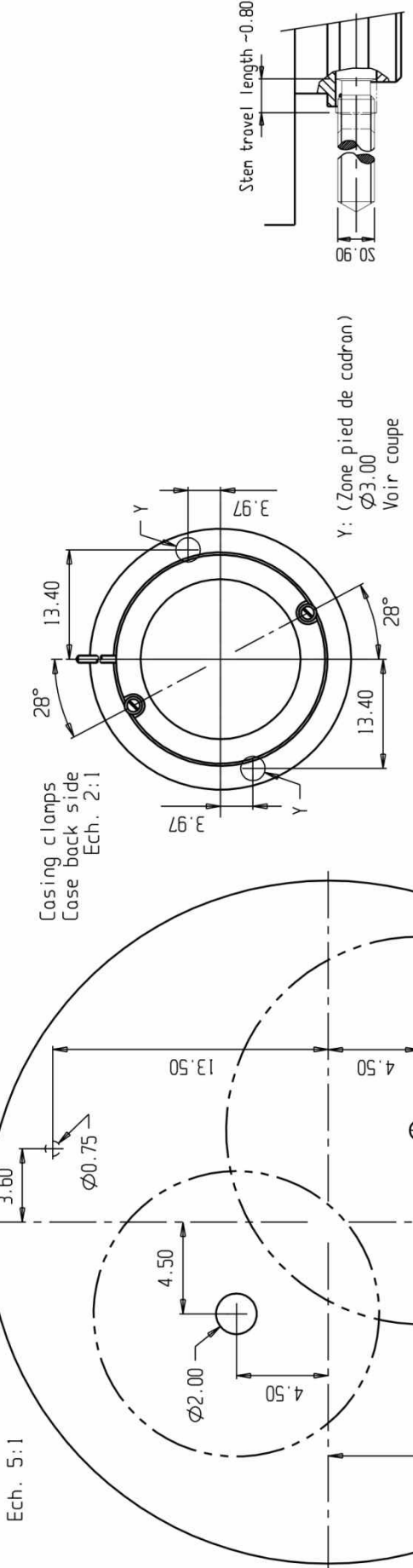
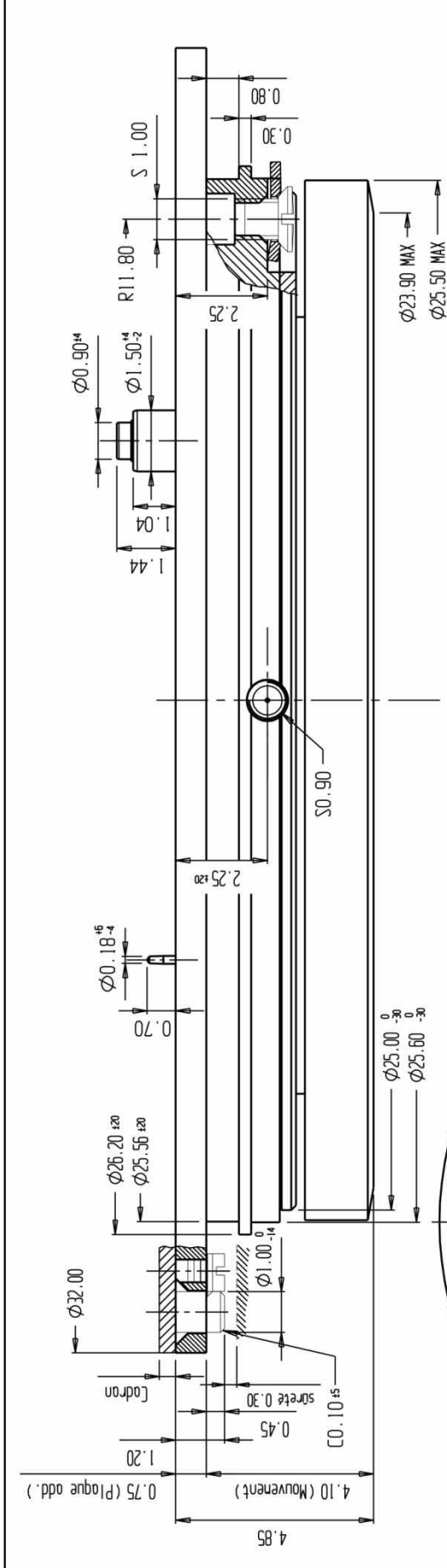
CAL. 715.042
AUTOMATIC,
21 JEWELS – SWISS MADE

Lever movement, sweep second with self-winding mechanism, jewel bearing,
frequency 4 Hz
(28'800 A/h 'vibrations per hour').



TECHNICAL SPECIFICATIONS

1. Outside Diameter	: 32.00 mm
2. Casing Diameter	: 25.60 mm
3. Stem height / Thickness	: 2.25 mm / 4.85 mm
4. Frequency	: 4Hz; 28'800 beats per hour
5. Power Reserver	: mini. 42 hours
6. Accuracy	: -5 /+20 sec per day
7. Jewels	: 21 (+10 plaque)
8. Shock absorbing devices	: 2
9. Amplitude	: T24 mini. 200°
10. Winding / Settings 2 positions	: 1) winding; 2) time setting



Casing clamps
Cose back side
Ech. 2:1

Ech. 5:1

Y: (Zone pied de cadran)
Ø3.00
Voir coupe

CORRECTIONS		MATIERE ET TRAITEMENT :		ECHELLE		Nb. P.C.	
No	DECISIONS/DATE	VISA					
01					10:1		1
		TERMINAISON :		COTES EN MILLIMETRES			
		DIVERS : Tol.générale ± 10		TOLERANCES EN MICRONS			
Cage pour boîte				CAL		DATE	
Frane for case				715		07.12.16	
				715		K.R	
				PIECE No/PART No		EXEC CODEF	
PLAN/DWG CK Edit				71590HAB01		71590000 42	
				FIELSA			
				Fabrique d'Ebauches Leschat S.A.			